



2

The Limpopo Intervention

Strategic Focus 2022-2026:

Developing a model for the effective use of teaching assistants in the classroom and acting as a strategic partner for the rollout of the Basic Education Employment Initiative.

1

The Eastern Cape Intervention

Strategic Focus 2022-2026:

Embedding coaching, monitoring and support within schools.

3

The Western Cape Intervention

Strategic Focus 2022-2026:

Ensuring buy-in at a district and classroom level and capacitating the WCED for provincial rollout.

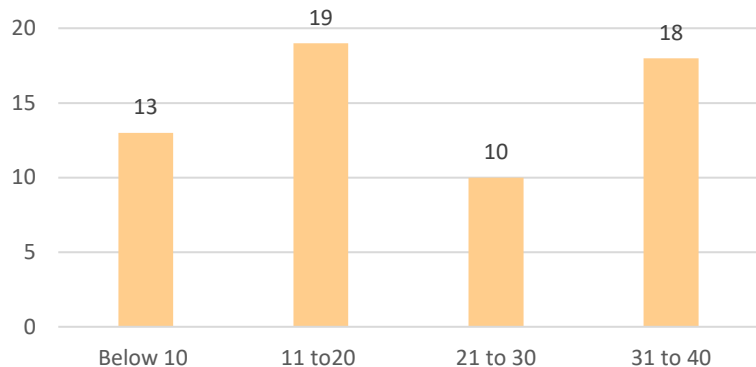


FundaWande
Reading for Meaning

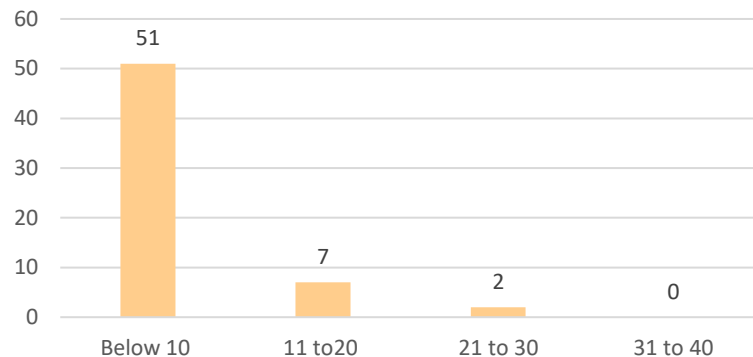
By 2030, all children **reading for meaning and calculating with confidence** by age 10.

Two Grade 1 classes at the end of Term 1

Grade 1: letter/sounds



Grade 1: Word Reading



40

By the end of the grade 1 all learners should know the letter sounds well, sounding at least 40 correct letters per minute

20

By the end of grade 2 all learners should be able to read at least **20 words** correct per minute when reading a passage

35

By the end of grade 3 all learners should be able to read **35 words** correct per minute when reading a passage

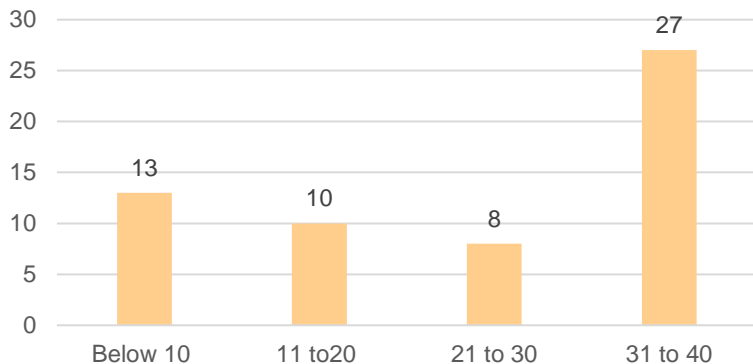


Funda Wande
Reading for Meaning

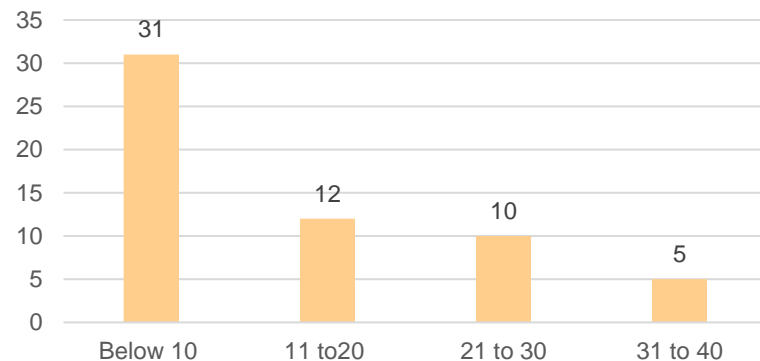
By 2030, all children **reading for meaning and calculating with confidence** by age 10.

Two Grade 2 classes at the end of Term 1

Grade 2: Letter/sound



Grade 2: Word reading



40

By the end of the grade 1 all learners should know the letter sounds well, sounding at least 40 correct letters per minute

20

By the end of grade 2 all learners should be able to read at least **20 words** correct per minute when reading a passage

35

By the end of grade 3 all learners should be able to read **35 words** correct per minute when reading a passage